



The Most Powerful Nanoscale Microscopy for Life Science

# Park NX-Bio

**The Power of Three Integrated into One:**

Scanning Ion Conductance Microscopy for Single Live Cell Imaging

Atomic Force Microscopy for Biomechanical Property Measurements

Inverted Optical Microscopy for Magnified Viewing

[www.parkAFM.com](http://www.parkAFM.com)

*Park*  
SYSTEMS

## Physiological Morphology Imaging for Biological Research Laboratories

### A Scanning Ion Conductance Microscope (SICM)

- In-liquid imaging with ease
- Delicate membrane morphology imaging at cellular and sub-cellular level
- Biological tissue imaging in three-dimensional (3D) structure

### B Atomic Force Microscopy (AFM)

- High resolution bio-imaging for single molecule with True Non-Contact™ Mode
- Force-distance (FD) spectroscopy for mechanical property characterization of various bio-materials
- Accurate FD spectroscopy control with leading low noise Z detector
- Force volume imaging

### C Live Cell Chamber

- Optimal temperature, pH, humidity control to maintain viable bio-activity

## Reliable and Repeatable Nano Bio-imaging for Better Experimental Verification

- Non-invasive SICM to preserve naïve morphological information of soft bio-materials
- Excellent imaging repeatability in automatically programmed and running software
- Accurate height/depth analysis from 3D structure measurements

## Full Integration with Inverted Optical Microscope for High Productivity

- Bright field and phase contrast for easier sample finding
- Access to full range of objective lenses up to 100x magnification
- Integration with confocal and fluorescence microscopy
- Advanced image overlay functions

# Park NX-Bio

## Discover the physiological phenomena of living cells at nanoscale

As a life scientist, you want to see how biological materials look like at nanoscale resolution and how soft they are in liquid and buffer conditions. Park NX-Bio enables that with its innovative in-liquid imaging Scanning Ion Conductance Microscopy (SICM) and its highly acclaimed Atomic Force Microscopy (AFM) technology.

## More powerful physiological biology study solutions

Park NX-Bio is a powerful 3-in-1 bio-research tool that uniquely combines SICM with AFM and an inverted optical microscope (IOM) on the same platform. The modular design of the Park NX-Bio allows researchers to easily switch between its SICM and AFM capabilities. Designed for non-invasive in-liquid imaging, Park NX-Bio is the ideal tool for studying biological materials under physiological conditions. It combines the bio-mechanical property measurement capability of the AFM and nano imaging of the SICM in liquid, and the optical viewing of the IOM.

## Easy to use, even for entry level researchers

Park NX-Bio has a user-friendly design and automated imaging software for SICM, so you won't have to spend so much time for in-liquid imaging. The basic setup for operation can be learned through a simple training course in only a few hours. This allows you to quickly shift your time to conducting more advanced research for your subject.



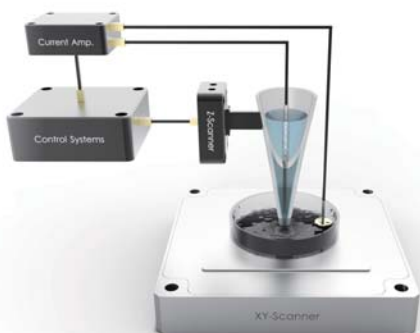
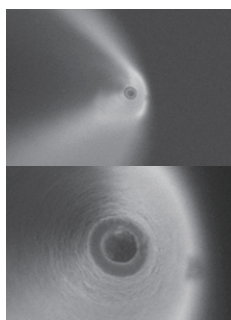
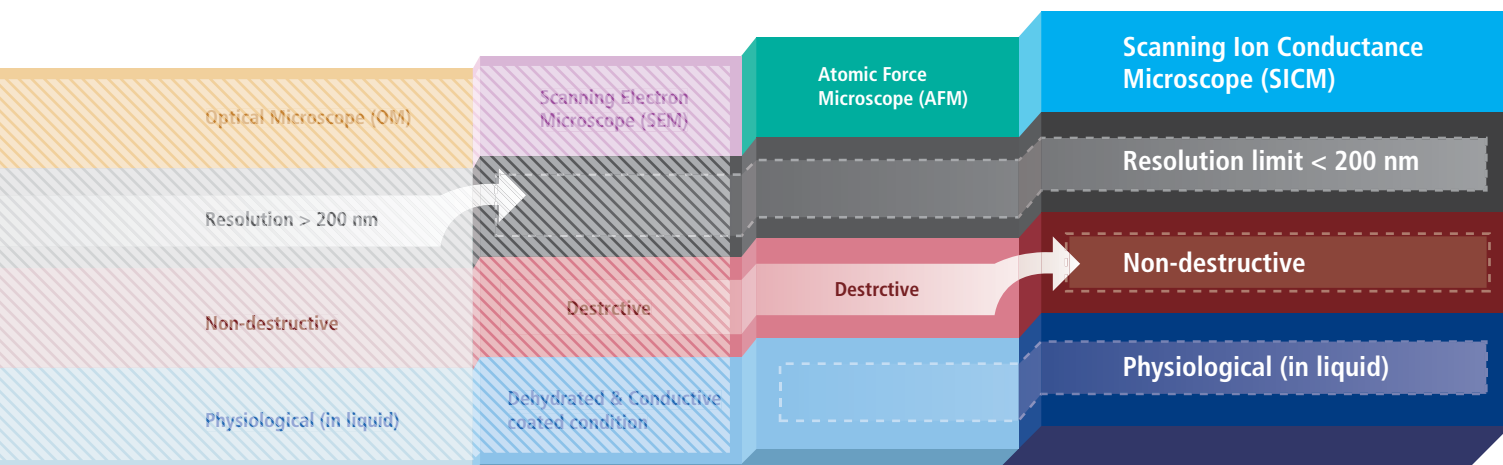
# Park NX-Bio

## The Scanning Ion Conductance Microscopy (SICM) Technology

### The SICM of Park NX-Bio is the next generation nanoscale microscope for life science

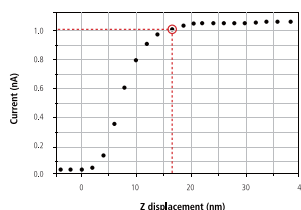
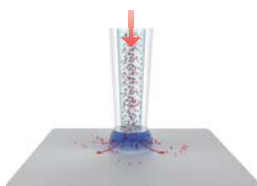
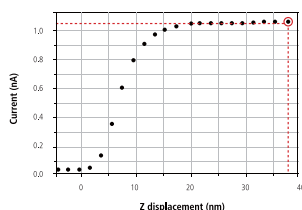
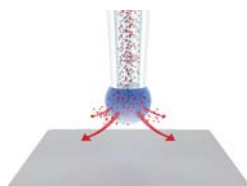
Park SICM can acquire biological images at nanoscale in physiological conditions, attaining high resolution of less than 200 nm. The biological images obtained from SICM are free from morphological deformation, which can occur from scanning electron microscopy (SEM) or even AFM systems.

- Scanning Ion Conductance Microscope (SICM)
- Atomic Force Microscope (AFM)
- Scanning Electron Microscope (SEM)
- Optical Microscope (OM)



#### Park SICM uses nanopipettes

In Scanning Ion Conductance Microscopy developed by Park Systems (Park SICM), a glass nanopipette filled with an electrolyte acts as an ion sensor that provides feedback on its location relative to a sample completely immersed in liquid. The pipette tip maintains its distance from the sample by keeping the ionic current constant. In comparison, AFM typically relies on interaction of forces between its probe tip and the sample. The pipette has an inner diameter about 100 nanometers, made of glass.

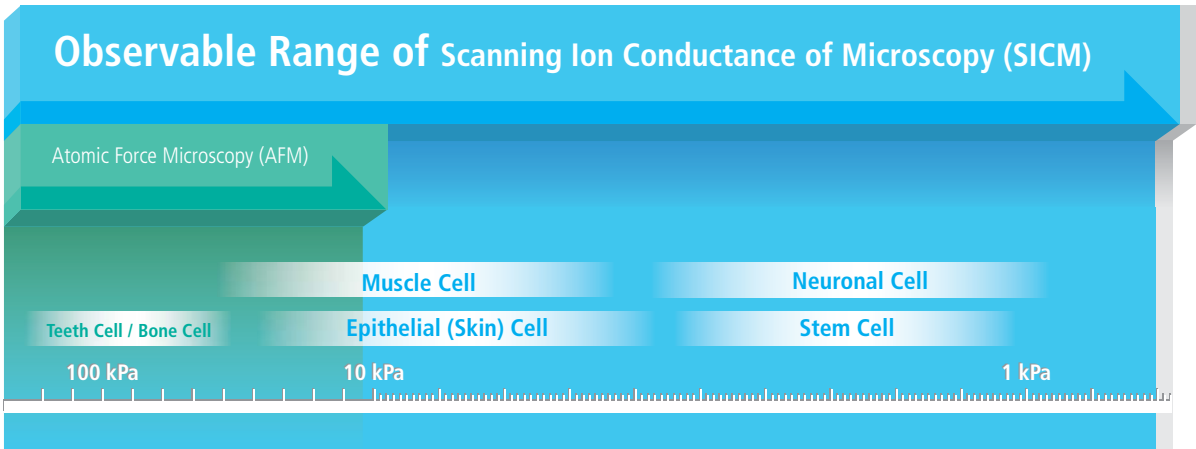


#### No Force, Non-Contact Imaging in Liquid

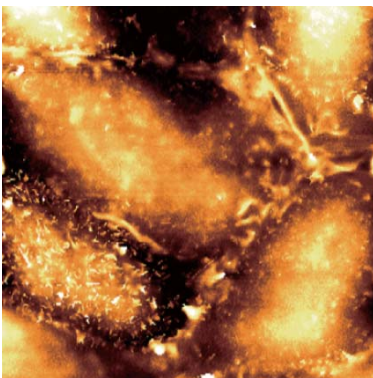
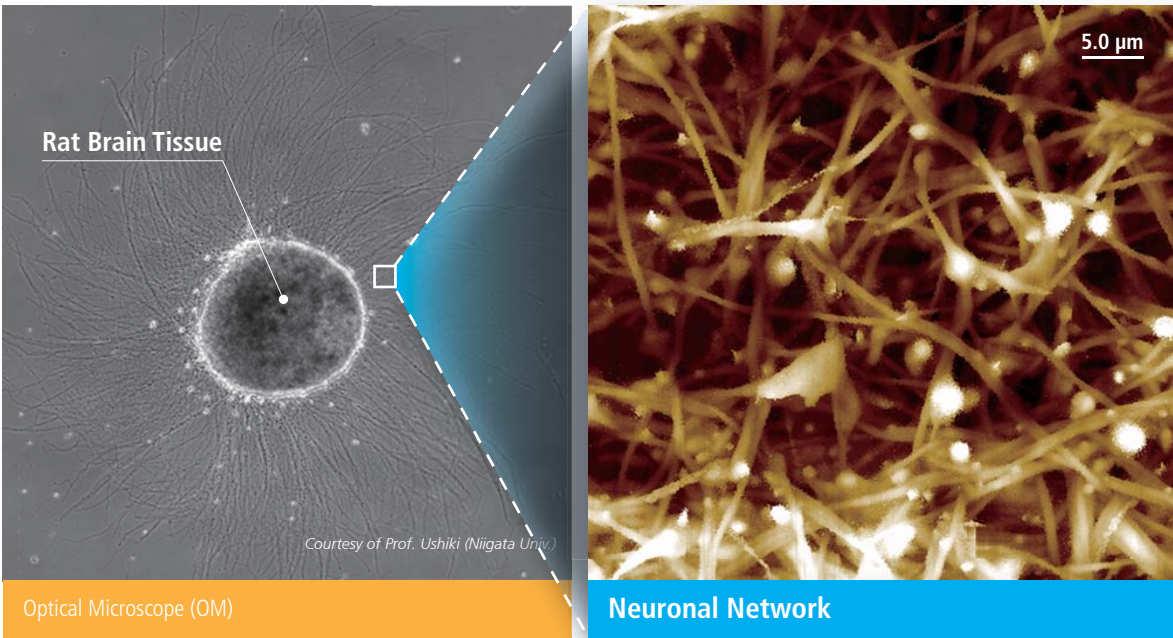
Similar to Scanning Tunneling Microscopy (STM) operating in ambient air, the Park SICM operates in liquid without making physical contact with the sample. Electrodes on either side of the sample and pipette produce ionic current that flows through the surrounding solution. A sensor measures the current flow, which decreases as the distance between the pipette and sample becomes smaller, and monitors the distance between the pipette and the sample to obtain the topology.

# Park SICM Can Image All Cell Types

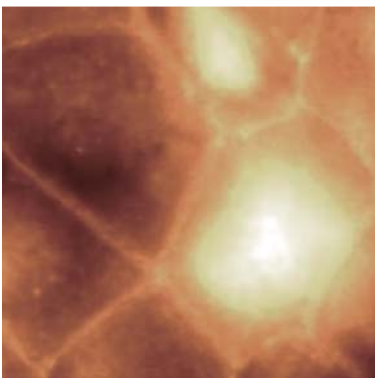
Park SICM can image even the softest cells such as the neuron cells, live—something that’s impossible with any other microscopy techniques.



Park SICM can even **image suspended network of neurons**



Human embryonic stem cells



Atomic Force Microscopy (AFM)



Rat trachea cell

**Park SICM** is able to **visualize delicate and tiny micro-villi structures** on cellular membrane that can not be detected by AFM

**Park SICM** does not damage or remove a cell's delicate hair-like structures

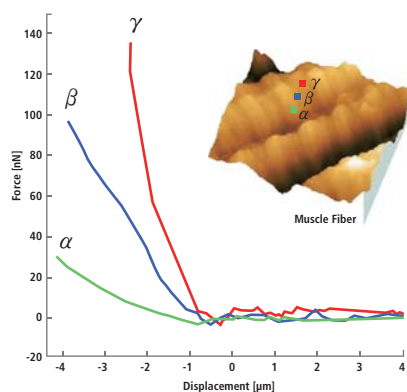
# Park NX-Bio

## Park AFM Technology

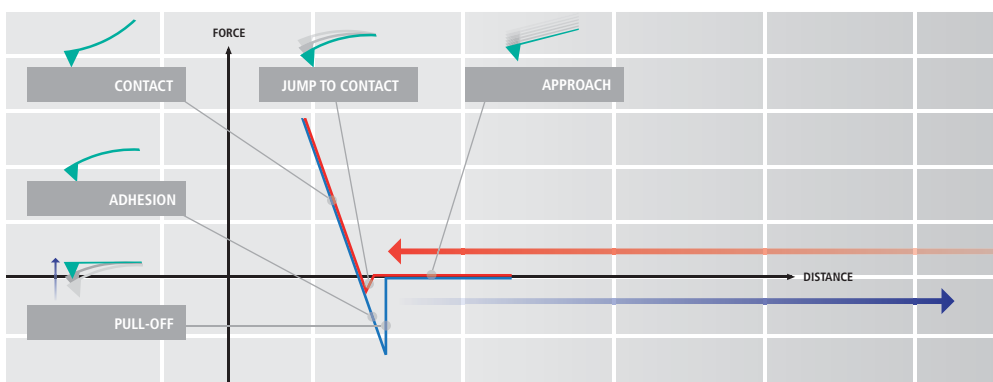
### Advanced Park AFM Technology Enables Accurate Force-distance Spectroscopy

Force-distance (FD) spectroscopy using an AFM is a beneficial tool to characterize bio-mechanical properties of various biological materials. In FD spectroscopy, the cantilever tip touches the sample surface with a user prescribed amount of force accurately applied using the AFM's Z scanner. Park AFM's industry leading low noise Z detector allows the researcher to control Z scanner movement to apply an exact amount of force very accurately to a sample surface during FD spectroscopy. This enables the researcher to collect detailed bio-mechanical characterization data at the nano-newton scale.

#### Cell's Mechanical Property Measurement



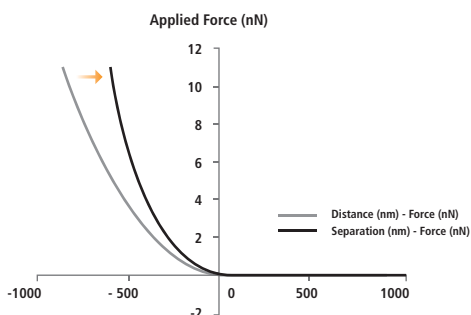
#### Force Distance Spectroscopy measures the mechanical interaction force between the tip end and the sample.



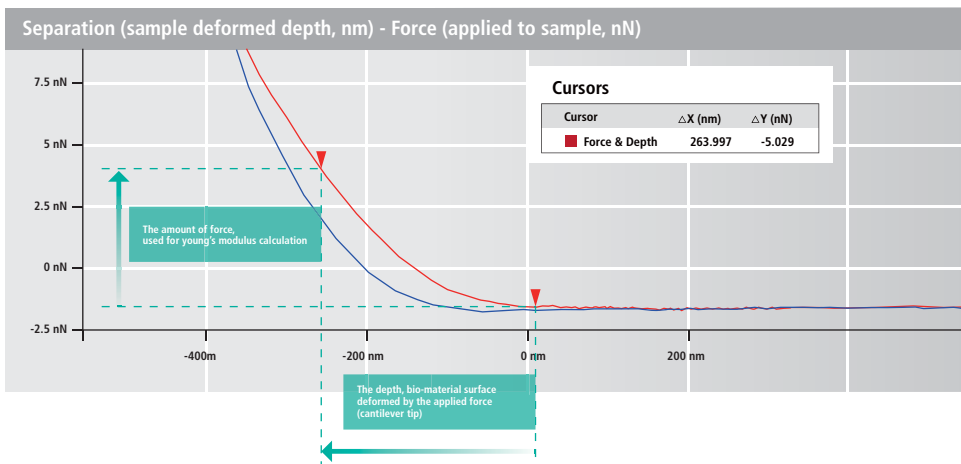
### Advanced Biomechanical Property Measurement by Calculating Elastic Modulus (Young's Modulus)

The Herzian and Oliver Pharr models are calculated automatically from the Park AFM's accurate FD spectroscopy data to determine the elastic modulus (Young's modulus). Both of these calculation methods are included in Park NXI, the data analysis software in Park NX-Bio. They strengthen the biomechanical data verification of FD curves obtained in your experiments.

#### Acquiring the actual depth, sample deformed by applied force (separation - force curve)



#### Calculating Young's Modulus in Hertzian model





# Park NX-Bio

## Park SICM and Park AFM Technologies Put Together

■ Scanning Ion Conductance Microscope (SICM)  
■ Atomic Force Microscope (AFM)

### Outstanding Investigation Tool for Biological Research by Combining Physiological Morphology with Bio-Mechanical Property Measurements

Park NX-Bio combines Park SICM's ability to interpret morphology under true physiological conditions and Park AFM's capacity to acquire bio-mechanical property data (elastic modulus) accurately. This enables researchers to understand the fundamentals of their biological materials at a deeper level.



#### Physiological Morphology Imaging with Park SICM



Collagen-film A

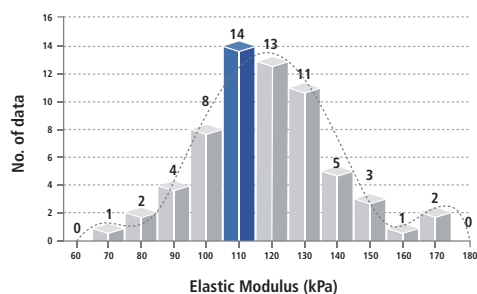
Scan Size: 20  $\mu\text{m}$  x 15  $\mu\text{m}$



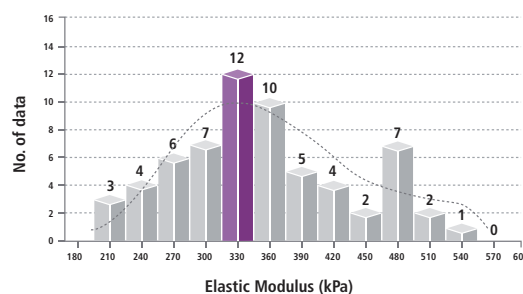
Collagen-film B

Scan Size: 20  $\mu\text{m}$  x 15  $\mu\text{m}$

#### Elastic Modulus: 113.2 kPa



#### Elastic Modulus: 345.1 kPa



#### Bio-Mechanical Property Measurement with FD Spectroscopy of Park AFM

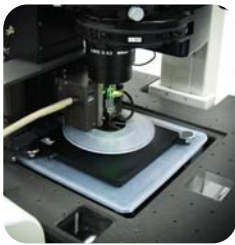
# Park NX-Bio

## Application Options

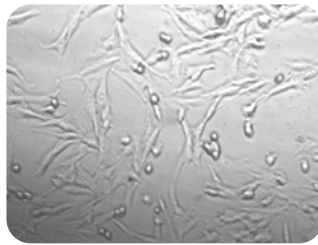
### Live Cell Study with Live Cell Chamber (SICM & AFM)

The live cell chamber creates an ideal environment for cells, improving their life expectancy during long measurement durations through controlled temperature, pH, and humidity at optimal conditions. Experiments with the live cell chamber have demonstrated cell survivability of more than 20 hours.

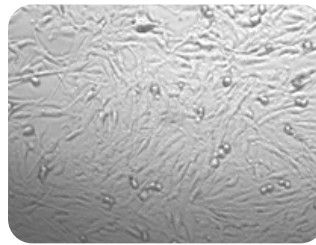
Live Cell Chamber



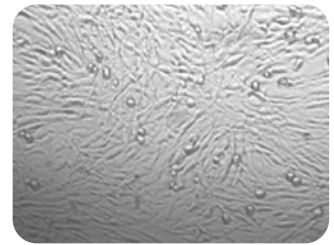
0 hours



24 hours



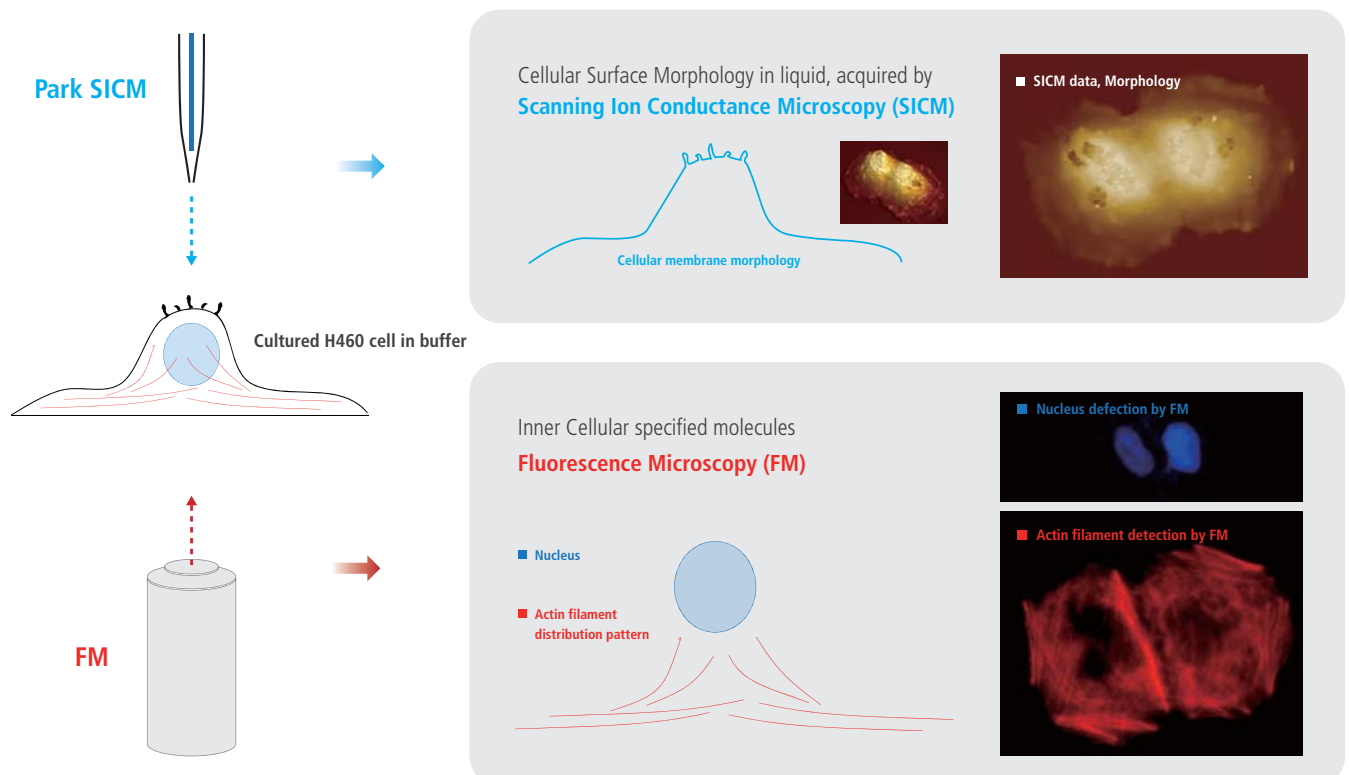
48 hours



Human fibroblast cells in the Live Cell Chamber of Park NX-Bio survive over 48 hours.

### More Comprehensive Cell Biology Study, by Integrating Fluorescence Microscopy with Park SICM

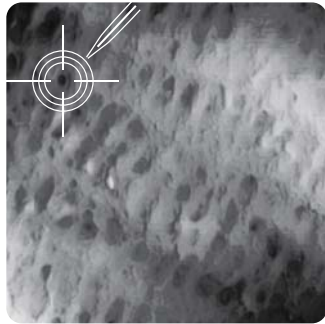
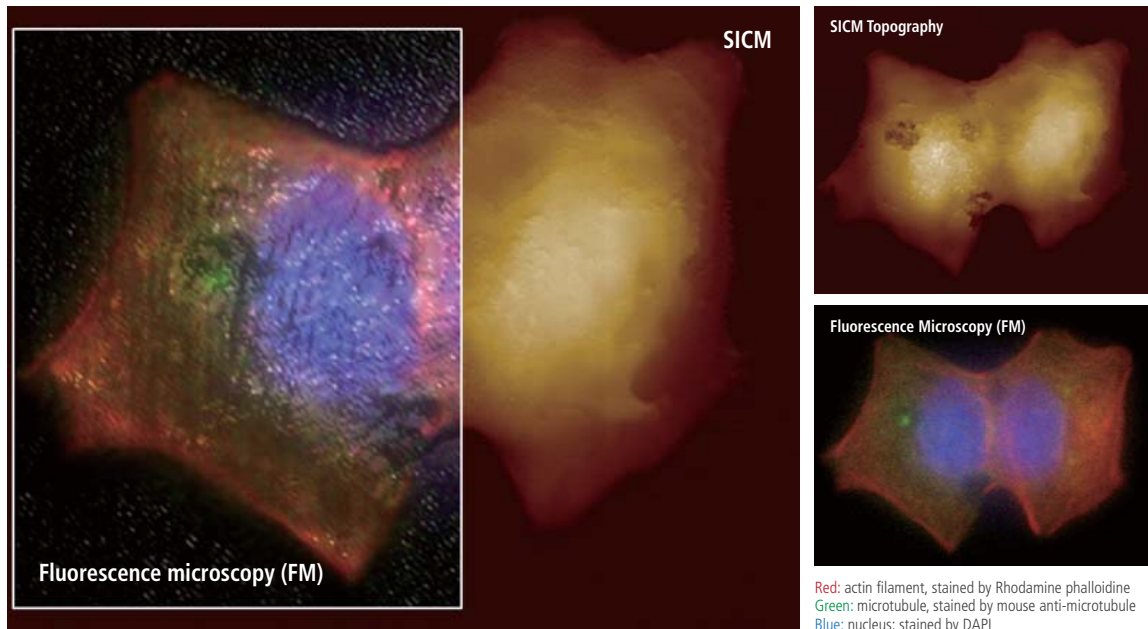
Combining fluorescence microscopy (FM) techniques with Park SICM can create new benefits and provide comprehensive information for cell biology studies that cannot be obtained when using only one of those techniques. While monitoring external cellular surface morphology with SICM, the internal cellular behavior can be observed by FM.





## Image Overlay: SICM Topography + Fluorescence Microscopic Image

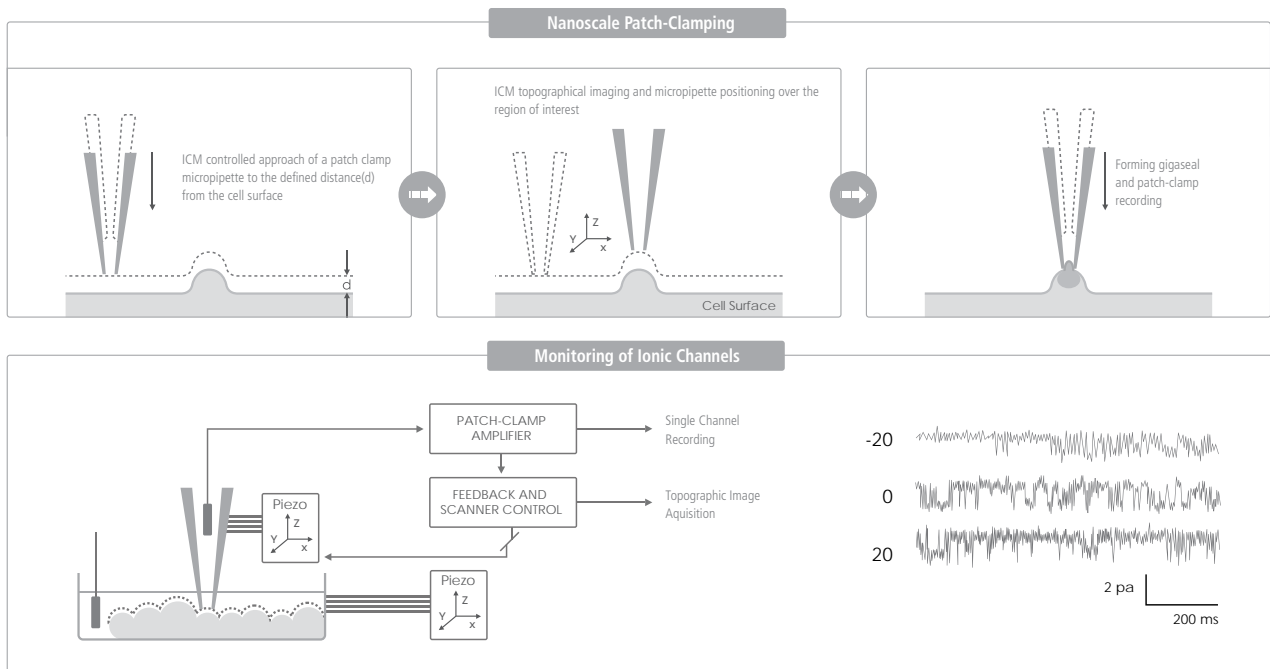
Park Systems' Image overlay software allows to combine fluorescence microscopic image onto SICM topography accurately. This dedicated software helps a complicate combining process much easier .



## Ion Channel Recording of Targeted Patch Clamping

Conventional Patch Clamping is an optical microscope view-based technique used to monitor a single living cell's ion channel activity—a key quantifier of various cellular activities. Targeted Patch Clamping is the SICM-based version of this technique that enables the detection of ion channel activities of specific subcellular structures.

$$\text{Park SICM} + \text{Patch Clamping} = \text{Targeted Patch Clamping}$$



# Park NX-Bio

## Specification

### SICM Head with pipette probe holder

Includes a low-noise, high-precision ionic current amplifier

Includes a high-force Z scanner

- Flexure-guided structure driven by multiply-stacked piezoelectric stacks
- Z scan range: 25  $\mu\text{m}$  (50  $\mu\text{m}$  Z scanner is available optionally)
- 20-bit Z position control and 24-bit Z position sensor

Dovetail lock head mount for easy mount/removal of the SICM head

- Automatically connects to the electronics upon mounting

### High Speed AFM head

Includes a high-speed Z scanner

- Flexure-guided structure driven by multiply-stacked piezoelectric stacks
- Z scan range: 25  $\mu\text{m}$
- 20-bit Z position control and 24-bit Z position sensor

Includes a probehead to which a cantilever is attached

- NCM oscillation frequency: Up to 3 MHz
- Voltage bias range to the cantilever: -10 V to 10 V

Detects the deflection of the cantilever using SLD (Super Luminescent Diode) for topography feedback

- SLD wavelength: 830 nm
- SLD has low coherence length eliminating optical interference
- SLD coherent length:  $\sim 50 \mu\text{m}$

Dovetail-lock head mount for easy mount/removal of the AFM head

- Automatically connects to the electronics upon mounting

### Supported Modes

#### SICM Standard Imaging

- DC mode
- ARS mode
- Z servo ARS mode

#### SICM Ionic Current Measurement

- Current-Distance (I-D) Spectroscopy
- Patch Clamping Integration (Targeted Patch Clamping)

#### AFM Force Measurement

- Force Distance (F-D) Spectroscopy
- Pin-Point mode for Surface Mechanical Property Imaging
- Force Volume Imaging
- Spring Constant Calibration by Thermal Method

#### AFM Standard Imaging

- True Non-Contact AFM
- Basic Contact AFM and DFM
- Lateral Force Microscopy (LFM)
- Phase Imaging

#### Optical Properties

- Raman Spectroscopy Integration
- Tip-Enhanced Raman Spectroscopy (TERS) Integration

### Software

#### SmartScan™

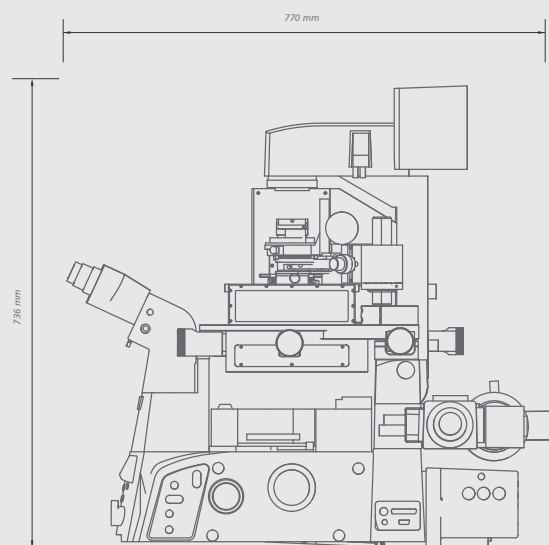
Dedicated system control and data acquisition software  
Adjusting feedback parameters in real time  
Script-level control through external programs (optional)

#### NXI

AFM data analysis software

### Computer with Dual Monitors

Intel® Core™ i3 or compatible  
4 GB RAM, 500 GB Hard Disc Drive  
Dual 23 inch LED monitors (1920 × 1080 pixels, DVI)  
Graphic Card: NVIDIA GeForce GT 630  
Operating System: Microsoft Windows 7 Professional 32 bit (English)



Scanner

Decoupled XY and Z-scanner  
Single module flexure XY-scanner with closed-loop control  
Scan range of XY-scanner: 100 µm x 100 µm

20-bit XY position control and 24-bit XY positioning sensor  
Working distance of Z-scanner: 25 µm  
Resonance frequency of Z-scanner: 9 kHz

XY Stage

Working range of XY stage: Software-controlled motorized stage for SICM/AFM head positioning  
Stage travel range: 14 mm  
Stage travel step: 0.1 µm  
Working range of Z stage: -14 mm, motorized movement  
Sample size: 

- 50 mm x 50 mm, 20 mm thick, and up to 500 g
- Petri dish (38 mm)

Accessories for Applications

Environmental control chamber for live cell imaging

Controls temperature, humidity, and pH

Temperature control

- Range: RT - 60 °C
- Heating elements placed at the top and bottom of the chamber to minimize temperature fluctuation

Includes Temperature Controller and Humidifier  
Includes covers for AFM head and SICM head  
Controls the pH of the Live Cell Chamber by supplying mixed CO2 gas

Universal Liquid Cell

Open/closed-cell environment for liquid imaging  
Temperature control

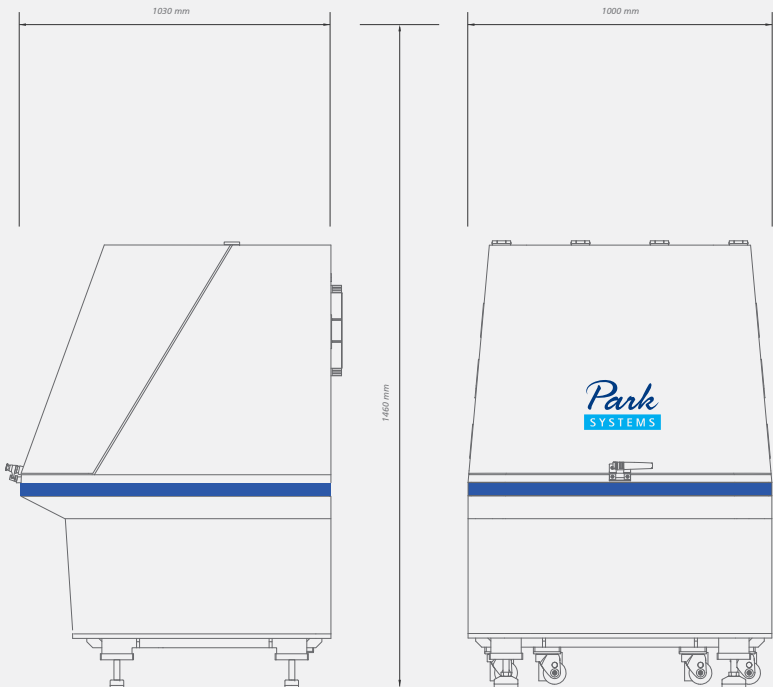
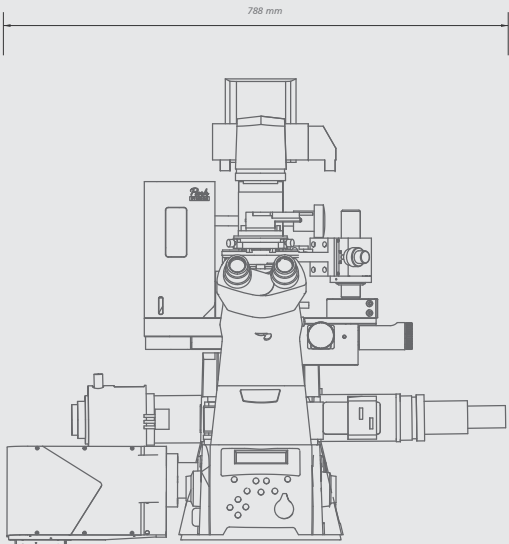
Enhanced Acoustic Enclosure (AE) for NX-Bio

Enhanced Acoustic Enclosure (AE) for NX-Bio  
Designed exclusively for the NX-Bio, the Integrated Acoustic Enclosure for SICM/AFM isolates the systems from external acoustic and light noise as well as floor vibration for ultimate performance.  
Includes active vibration isolation system with direct velocity feedback to cancel out the floor vibration  
Active frequency: 0.7 Hz to 1 kHz  
Best solution for high resolution in-liquid imaging  
Ergonomic design for a convenient access to the instrument  
Dimension: 1,000 x 1,030 x 1,460 mm (outer)  
Weight: 661 kg

Optical Configuration for Park NX-Bio

Compatible with inverted microscopes from

- Zeiss (Axio Observer Z.1)
- Nikon (Ti-S, Ti-U, Ti-E)
- Compatible with confocal microscopes and fluorescence technique such as TIRF, STORM TopviewOptics (upright optics) with CCD camera for opaque samples



# Park Systems

Dedicated to producing the most accurate and easiest to use AFMs

The global headquarters is located at  
Korean Advanced Nanotechnology Center (KANC) in Suwon, Korea.



More than a quarter century ago, the foundations for Park Systems were laid at Stanford University where Dr. Sang-il Park, the founder of Park Systems worked as an integral part of the group that first developed AFM technology. After perfecting the technology, he then went on to create the first commercial AFM and later Park Systems was born.

Park Systems strives everyday to live up to the innovative spirit of its beginnings. Throughout our long history, we have honored our commitment to providing the most accurate and yet very easy to use AFMs, with revolutionary features like True Non-Contact™ mode, and many automated software tools. We are not simply content to rest on our past success. All of our products are designed with same care and creativity that went into our first, allowing you to focus on getting results without worrying about the integrity of your tools.



[www.parkAFM.com](http://www.parkAFM.com)

## HEADQUARTERS

GLOBAL HEADQUARTERS: +82-31-546-6800  
AMERICAS HEADQUARTERS: +1-408-986-1110  
JAPAN HEADQUARTERS: +81-3-3219-1001  
SE ASIA HEADQUARTERS: +65-6634-7470

## OCEANIA

Australia and New Zealand: +61-2-9319-0122

## ASIA

China: +86-10-6401-0651  
India: +91-40-655-88-501  
Indonesia: +62-21-5698-2988  
Malaysia: +603-8065-3889  
Philippines: +632-239-5414  
Saudi Arabia: +966-2-640-5846  
Taiwan: +886-2-8227-3456  
Thailand: +662-668-2436  
UAE: +971-4-339-2603  
Vietnam: +844-3556-7371

## EUROPE

France: +33-1-6953-8023  
Germany: +49-6103-30098-0  
Italy: +39-02-9009-3082  
Israel: +972-3-923-9666  
Switzerland: +41-22-788-9186  
Romania: +40-21-313-5655  
Russia: +7 (495) 22-11-208  
Spain and Portugal: +34-902-244-343  
Turkey: +90-312-236-42-0708  
UK and Ireland: +44(0)1372-378-822  
Benelux, Scandinavia, and Baltics: +31-184-64-0000

## AMERICAS

USA: +1-408-986-1110  
Canada: +1-888-641-0209  
Brazil: +55-11-4178-7070  
Colombia: +57-347-0060  
Ecuador: +593-2-284-5287

*Park*  
SYSTEMS